

CERTIFICATE OF LOCATION OF GOVERNMENT CORNER

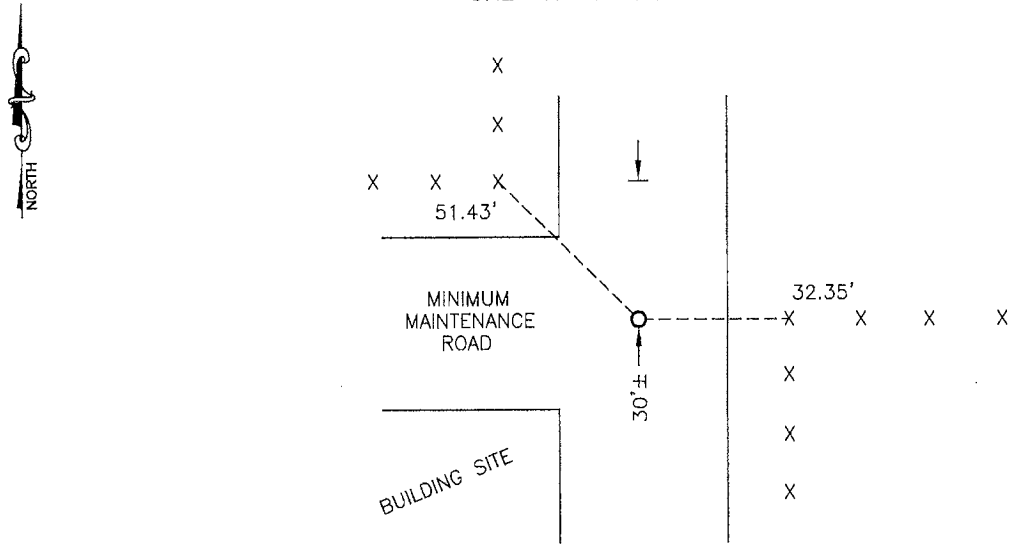
NORTH QUARTER Corner of Section 31, Township 106, Range 40, 5TH P.M.

STATE OF MINNESOTA, County of MURRAY

At the corner location shown on the sketch:

- On _____ found a _____
DATE
- left monument as found, lowered monument, removed monument (explain)
- On 10/9/13 placed a 5/8" iron w/seal #43844
DATE

SKETCH OF REFERENCE TIES



Minnesota State Plane Coordinate
 System Murray County Datum
 NAD83 (1996)
 N: 136946.871
 E: 519428.414

Nail and seal in corner fence post East 32.35'
 Nail and seal in corner fence post NW 51.43'

Statement of evidence relative to this corner location is on back of page.

I hereby certify that this document and the data contained herein was prepared by me or under my direct supervision.

James V. Johnson 2/4/14
 SIGNATURE DATE

Registration No. 43844

- Land Surveyor, Professional Engineer
- County Surveyor, County Engineer

OFFICE OF THE COUNTY RECORDER

County of _____

I hereby certify that this document was filed in the Co. Recorders office at _____ M on the _____ day of _____ A.D. 20 _____

County Recorder FEB 5 2014
 By *James V. Johnson*, Deputy

DOCUMENT NO. _____

Statement of Evidence

In 1861, D.W. Wellman and S.S. Smoot did the original subdivision of the township.

On October 9, 2013, Bueltel-Moseng Land Surveying set a 5/8" iron with seal #43844 in center of road and in line with fence to the east. It is 30'± south of road right-of-way fence to the west.